

# APR66 Series

## Single-Stage, High-Pressure Regulator

Pressure Reducing • Stainless Steel



### Value Proposition:

The Parker APR66 is a high pressure-reducing, single-stage regulator designed to operate at inlet pressures up to 6,000 psig. A full range of pressure sensing can be achieved without time-consuming spring and piston changeouts.

### Product Features:

- Piston Sensing
- Thrust bearing allows low actuating torque and precise setability
- Low friction adjusting screw sleeve provides smooth operation
- Optional self-relieving feature allows user to decrease outlet pressure in closed systems. Feature is actuated by turning the adjusting knob counterclockwise
- Oxygen cleaned in accordance with ASTM G93 Level C

### Specifications:

Functional Performance	
<b>Design</b>	
Burst Pressure	18,000 psig (1,241 barg)
Proof Pressure	9,000 psig (620 barg)
<b>Flow Capacity</b>	
C <sub>v</sub> Options	C <sub>v</sub> 0.05
<b>Leak Rate: Internal</b>	Bubble Tight
<b>Leak Rate: External</b>	Bubble Tight
<b>Supply Pressure Effect</b>	100-1000 psig (4 psig/100 psig (0.28 barg/7 barg) 100-2000 psig (4 psig/100 psig (0.28 barg/7 barg) 100-3000 psig (4 psig/100 psig (0.28 barg/7 barg) 100-6000 psig (6 psig/100 psig (0.4 barg/7 barg)
<b>Approximate Weight</b>	3.0 lbs. (1.4 kg)

Operating Conditions	
Maximum Inlet	6,000 psig (414 barg)
Outlet Options	100 - 1000 psig (69 barg) 100 - 2000 psig (138 barg) 100 - 3000 psig (207 barg) 100 - 6000 psig (414 barg)
Maximum Temperature of Flow Media	-40°F to 165°F (-40°C to 74°C) Note: Metal Knob required for high temperature applications

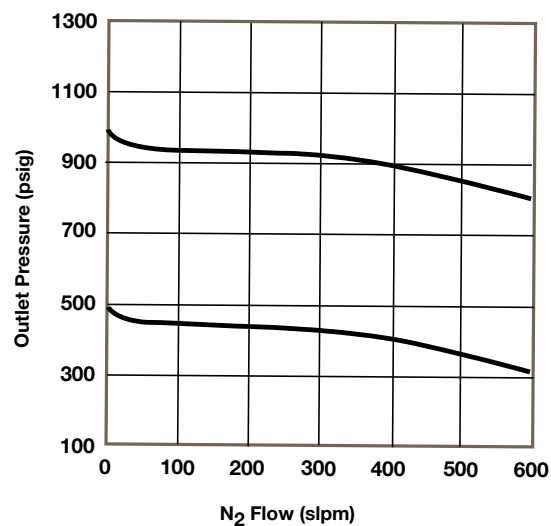
Material of Construction	
Wetted	
Body Options	316L Stainless Steel (std).
Poppet	316L Stainless Steel
Spring	Hastelloy® C-22
Seat	PEEK™
Seat & Screw Clamp	316L Stainless Steel
Plug & Screw	316L Stainless Steel
Piston	Torlon®
Piston Housing	316L Stainless Steel
Stem	316L Stainless Steel
Seals	Aflas®, PTFE and PCTFE
Non-Wetted	
Cap	Nickel Plated Brass
Nut	316L Stainless Steel
Knob Options	ABS (std) or Aluminum

For additional information on materials of construction, functional performance and operating conditions, please contact factory.

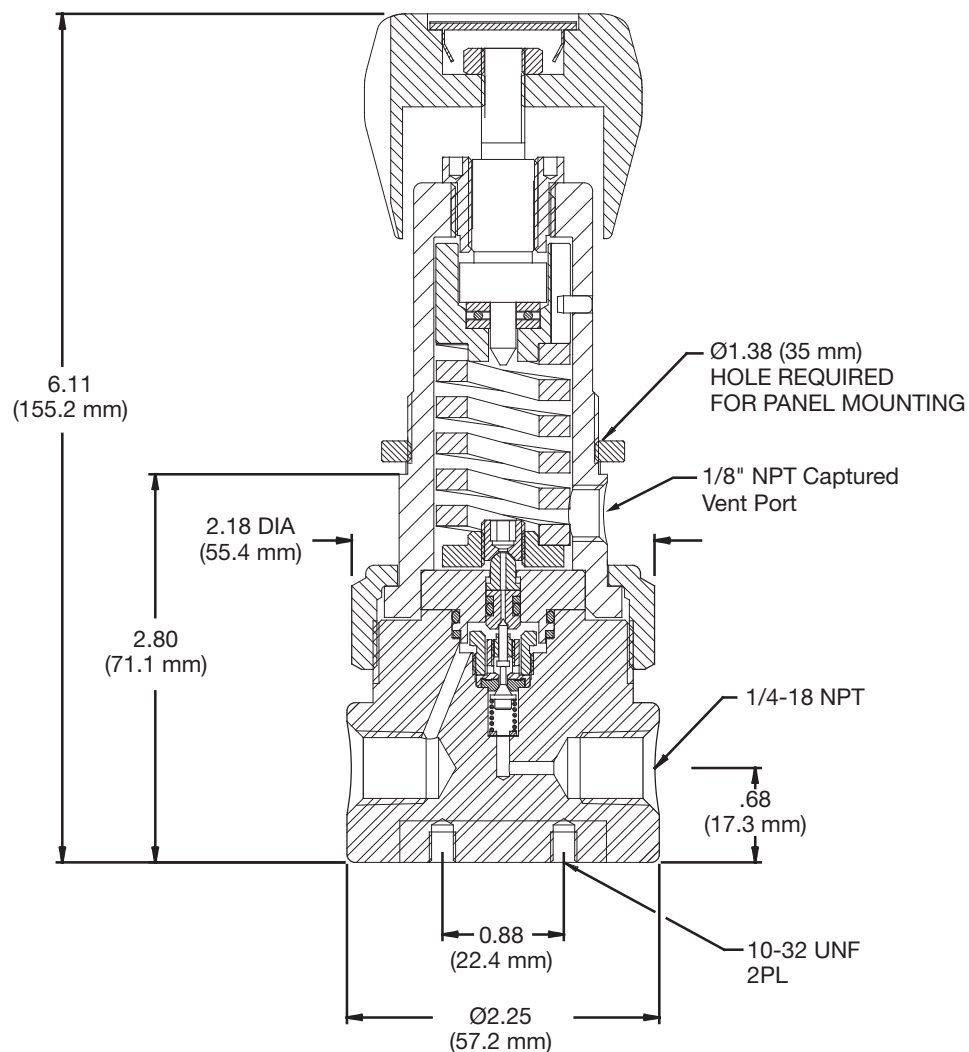
Hastelloy® is a registered trademark of Hayes International, Inc.  
Aflas® is a registered trademark of 3M Company.  
PEEK™ is a trademark of Victrex plc.  
Torlon® is a registered trademark of Solvay Specialty Polymers.

# APR66 Series

## Flow Curve:



## Dimensional Drawing:



# APR66 Series

## Ordering Information:

Building a Part Number: *Example: APR66S4P1XX4M*

Example Part Number:	APR66	S	4P	1	X	X	4	M
Ordering Parameters/Options:	Series	Body Material	Porting	Pressure Range	Outlet Gauge	Inlet Gauge	Port Style	Optional Features
Table Reference: (see below)	A	B	C	D	E	F	G	H

### A - Series

APR66	APR66 Series Regulator
-------	------------------------

### B - Body Material

S	316L Stainless Steel
---	----------------------

### C - Porting

2P	2 Ports (No X required for gauges, inlet & outlet ports only)
3P	3 Ports (One X for gauge port)
4P	4 Ports (Two X's for gauge ports)

### D - Pressure Range

1	100-1000 psig
2	100-2000 psig
3	100-3000 psig
4	100-6000 psig

### E - Outlet Gauge

20	0-2000 psig
30	0-3000 psig
40	0-4000 psig
60	0-6000 psig
X	No Gauge (Gauges may be provided by local Parker Distributor)

### F - Inlet Gauge (Gauges may be provided by local Parker Distributor)

40	0-4000 psig
60	0-6000 psig
X	No Gauge

### G - Port Style

4	1/4" NPT Female (All Gauges are 1/4" NPT Female)
---	--

### H - Optional Features

M	Metal Knob (Black)
SR	Self-Relieving (For safety purposes, the optional self-relieving feature is not recommended for toxic or flammable gasses or liquids.)

Note:

Each unit is standard with a threaded cap and panel mount nut.

**Parker Instrumentation Products Division reserves the right to plug NPT ports**

Pressure  
Regulators